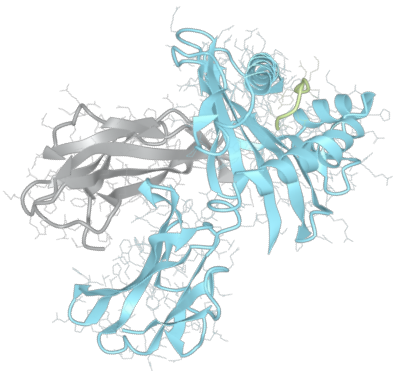


Product datasheet

sHLA-B*51:02

B*5102, B5102, B*51, B51, B5102



Serological Name	B5102
Peptide Load	Endogenous
Modification	Unmodified
Conjugation	Unconjugated
SKU	B5102

Product Description

Allele Name	B*51:02 B2m
HLA Class	HLA Class I
HLA Gene Locus	HLA-B
Alternative Allele Name A Chain	B*5102, B5102, B*51, B51, B5102
Alternative Allele Name B Chain	-
Description	Recombinant, truncated Class I soluble Human Leukocyte Antigen (sHLA), naturally folded and glycosylated, loaded with endogenous peptides.
Serological Name	B5102
Serological Split	B51
Bw4/Bw6 Assignment	Bw4
Bw4/Bw6 Sequence	NLRIALR
Allele Frequency [World Population]	
A chain	1.00%
B chain	-

Associated products

[B5102bio](#)
[B5102pe](#)

Product Specification

Product name	HLA-B*51:02
HLA Species	Human
Host Cell Line Species	Human
Clone Designation	E6B3
Tail Specification	VLDL
Peptide Load	Endogenous
Modification	Unmodified
Conjugation	Unconjugated
Complexity	Monomer
Protein Format	Recombinant, truncated, soluble, non-modified, non-labeled, endogenously loaded
Storage Temperature	4 °C (This product should be stored undiluted)
Form	Liquid
Concentration	1000.0 µg/ml
Formulation	PBS/0.02% Sodium Azide
pH	7.4
Purification Method	Affinity Chromatography
Grade	Research Use Only [RUO]
Authentication Verification	Sequence Based Typing

Protein Sequences

Alpha Chain Sequence	GSHSMRYFYT AMSRPGRGEP RFIAVGYVDD TQFVRFSDSA ASPRTEPRAP WIEQEGPEYW DRNTQIFKTN TQTYRENLRI ALRYYNQSEA GSHTWQTMYG CDVGPDRLL RGHNQYAYDG KDYIALNEDL SSWTAADTAA QITQRKWEAA REAEQLRAYL EGLCWEVLRRL YLENGKETLQ RADPPKTHVT HHPVSDHEAT LRCWALGFYP AEITLTWQRD GEDQTQDTEL VETRPAGDRD FQKWAAVVVP SGEEQRYTCH VQHEGLPKPL TLRVSVSTDD DLA
Beta Chain Sequence	IQRTPKIQVY SRHPAENGKS NFLNCYVSGF HPSDIEVDLL KNGERIEKVE HSDLSFSKDW SFYLLYYTEF TPTEKDEYAC RVNHVTLSPQ KIVKWRDRM

Related Products

[B5101](#)
[A0201](#)
[A0301](#)
[B0702](#)

Applications

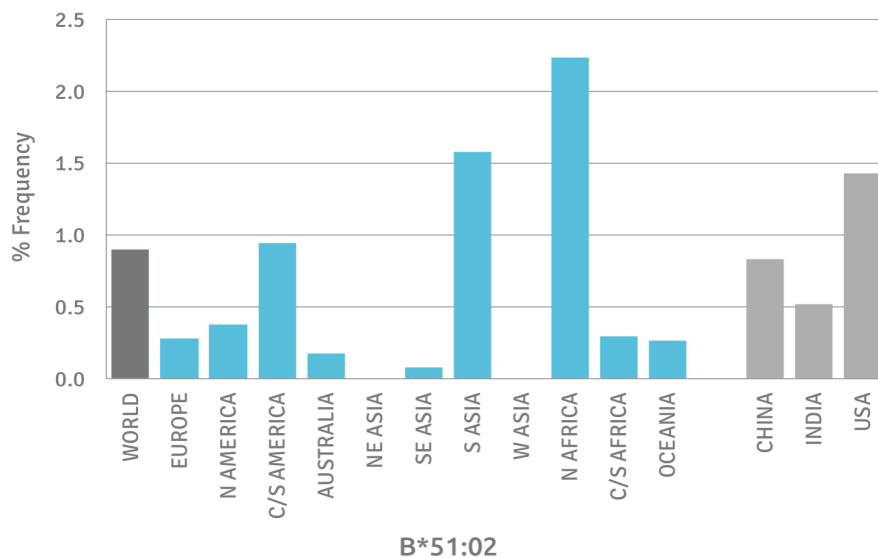
HLA Sandwich ELISAs
 HLA Direct ELISAs
 HLA-Sera Antibody Assays
 HLA Controls in ELISA Assays
 HLA Assay Standards
 HLA Blocking Assays
 HLA Neutralizing Assays
 HLA Competition Assays
 HLA Bead Assays
 HLA Immunization Procedures

Recommended Antibodies

W6/32
 Anti-B2m

Allele Frequency

Worldwide Allele Frequency



Please note:

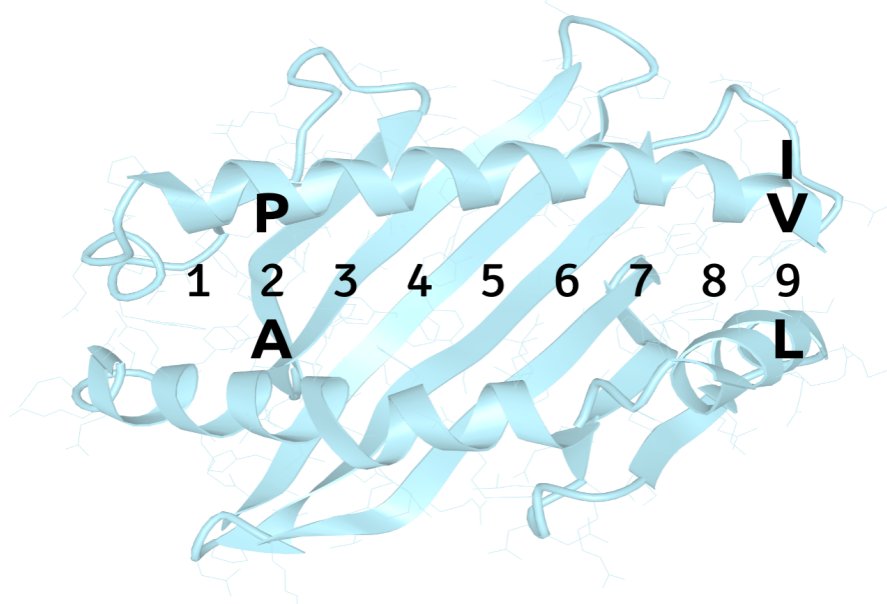
ALL PRODUCTS ARE FOR RESEARCH USE ONLY. NOT FOR COMMERCIAL USE IN DIAGNOSTIC PROCEDURES.
 For more information, please visit our Policies section on our website. For licensing inquiries, please contact

licensing@hlaprotein.com

HLA Protein
 PURE PROTEIN, LLC

Motif

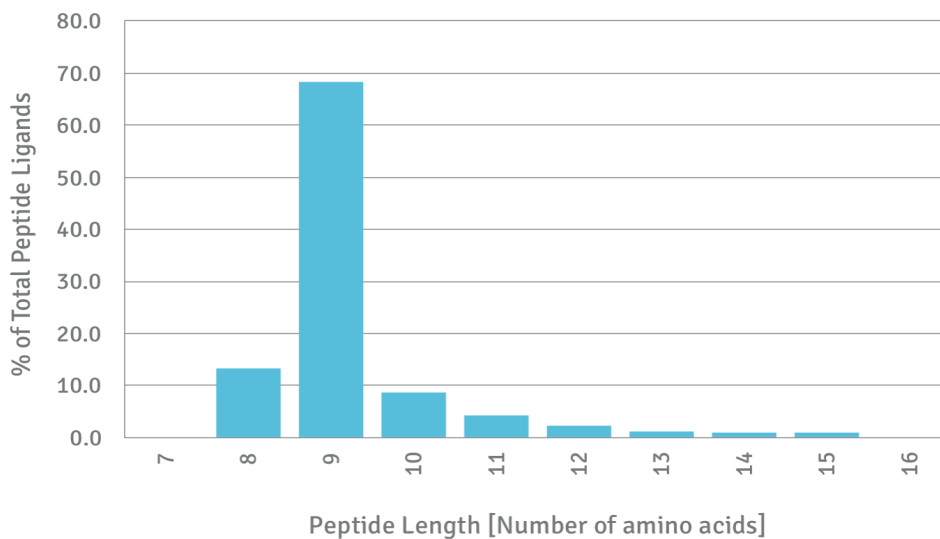
B*51:02 BINDING MOTIF



Length Distribution

HLA Length Distribution

B*51:02



Please note:

ALL PRODUCTS ARE FOR RESEARCH USE ONLY. NOT FOR COMMERCIAL USE IN DIAGNOSTIC PROCEDURES.

For more information, please visit our Policies section on our website. For licensing inquiries, please contact

licensing@hlaprotein.com

